



**Post 16 Prospectus
September 2012**

Contents

Welcome

Effectiveness of the Sixth Form

Opportunities

Courses

Advanced Level

Advanced Subjects

Improvers

Choosing the Correct Level

Support and Guidance

Enrichment

Vertical Tutoring

Contact details



Welcome

Thank you for your interest in Sherburn High School Sixth Form.

Being a Post 16 student is one of the most exciting times of your life. At Sherburn High School we provide a vibrant learning community where the emphasis is on encouraging each individual's personal development, as well as striving towards academic excellence. We take great pride in our enrichment programme, which provides students with plenty of opportunities to thrive socially and morally beyond the classroom. If you are successful in your application to join our Sixth Form then all of these factors will influence the person you become.

The subject details within this prospectus will help you to choose the right courses to bring you success and enable you to reach the next step in your life goals.

We pride ourselves on the spirit of our Sixth Form and the sense of community; high academic aspirations and strong relationships are at the heart of this community. We strive to offer a wide range of curricular and extra curricular opportunities for you to explore; we want these to motivate you to 'get involved' and achieve your full potential. Our experienced pastoral team aim to advise, guide and support you through your Sixth Form journey where you will be given plenty of opportunities and time to reflect on ways in which you can best fulfil your responsibility, both as a learner, and as a member of the Sherburn High School Sixth Form community.



Effectiveness of the Sixth Form

Ofsted 2010 found that:

'There is a positive ethos in the sixth form.'

'Students have a pride in their school and have a high regard for their teachers.'

'Students speak of a real sense of belonging and strong community spirit.'

Since the 2007 Ofsted report results at Post 16 have shown an improvement year-on-year and the current year's tracking indicates that this growth trend is continuing.

Current students say:

Hannah Davis, Head Girl Y13:

'The transition from KS4-KS5 seems a big step to make, but I found it really easy to settle in to sixth form life.

Here at Sherburn, we have the best of both worlds – we have the continued support of teachers who we've built a close relationship with in high school and the comfort of being in familiar surroundings, but also the benefits of not being regarded as children any more and a more relaxed atmosphere, with smaller class sizes allowing us a more personalised education.

This spirit within the sixth form has been established as we spend time together in our social area and through activities like the Athelstan Challenge (enjoyed by participants and spectators alike, but especially the *very* competitive teachers), as well as social events like the Christmas party.

We have to work hard too, though; the emphasis is on independent learning, a big difference to GCSE study. I like this aspect, as it means we have to use our own initiative. My AS levels are quite essay-based, so I have to be very organised with my time! Despite this, the study periods we have really help – working during these hours means we have more free time elsewhere.'

Rebecca Floyd and Ben Joy - Head Boy and Head Girl just left and now at University:

'After attending Sherburn High School for five years it was a very easy decision when it came to choosing where to study our A Levels. Our experiences at Sherburn High School Sixth Form have been enjoyable and valuable. There is a good relationship between students and staff, which creates a more relaxed learning environment. A community feel can often be found within the students, making it a great social experience too. We have received plenty of support throughout our studies and during the university application process, as teachers are on hand during our study periods to help us when needed. Our time at Post 16 has been rewarding and we feel it has helped us reach our full potential.'

Last year's Year 13 views:

Jess Smith (now at Lincoln University studying Maths):

'It has prepared me for Uni life'

Natalie Carter (now at York University studying Geography):

'We're respected and treated like adults'

Christina Lawson (now pursuing an apprenticeship at an accountancy firm):

'I've gained more independence'

Jasmine Chappell (now at York St. John studying Psychology):

'The team building days bring the sixth form community together'

Emma Turner (now at Leeds Met. University studying Human Geography):

'The teachers are friendly and supportive'

Opportunities

Our curriculum leads to nationally recognised qualifications at both Advanced and GCSE equivalent Level. We aim to tailor our timetable to each individual's needs.

We provide an extensive enrichment programme full of opportunities to allow you to broaden your experiences and to extend your skills in order to equip you effectively for later life, including community work and opportunities for work experience and visits to events

Many students contribute significantly to the life of the school and the broader community during their time with us through their involvement in whole school events and productions

Our position within an 11 to 18 school means that a Post 16 student can accept positions of responsibility and provide role models for younger students, working in classrooms with them or coaching and supporting them in their own extra curricular activities. In addition you will benefit from the wide range of activities and facilities provided for the rest of the school.

You will be part of a Vertical Tutor group and your tutor will be the person who gets to know you best and they will therefore write your UCAS or employment reference when you have completed your time with us and are ready to move onto the next stage in your life. You will also be able to get fully involved in the life of your tutor group and take on roles that will help to enrich your C.V. or Personal Statement for UCAS.

Facilities

Post 16 students at Sherburn have access to the following Facilities:

- Three Post 16 dedicated ICT rooms containing 16 PCs in each room
- Common Room
- Drinks' vending machine
- Purpose built teaching rooms
- Disabled access
- Access to Library facilities
- Higher Education support
- Outdoor seating area

Courses

Learning routes available in 2011:

Advanced Level AS and A2 Courses

Advanced Level courses are available in a wide range of subject areas available to students who have already achieved five GCSE passes at grade C or above.

Maths / English GCSE resit

This course is for any students wishing to re-sit either their Maths and / or English from GCSE

Improvers Level 2 Business Admin

This course is for students who wish to work in this or a related field and who wish to work towards achieving the equivalent of five GCSE passes at Grade C.



Advanced Level

Advanced courses are divided into units. You start an AS course in the first year and can then take it for another year at A2 level.

Advanced Subsidiary (AS) Courses

AS courses provide a valuable preparatory step for students as they move on from GCSE work towards an A level qualification. They have half the value of the full A level award and can be completed as a stand alone qualification which can help with entry to Further and Higher Education or employment

Advanced (A2) Courses

A2 Courses follow on from study at AS level. Marks awarded for A2 units are combined with the total marks for the AS units and this is how the final A2 grade is awarded.

We have a tradition at Sherburn of students continuing with their Applied ICT course taken as an option in Years 10 and 11. They complete a full A level in ICT by the end of Year 12

Advanced Level Examinations

You will take Advanced Level (AS and A2) external examinations in May/June of Years 12 and 13. In some subjects you are likely to have external examinations in January of Years 12 and 13.

Students on Advanced level courses usually study four subjects in Year 12 and continue with three of them in Year 13.

Three subjects is the minimum number of subjects a student is required to take. No student is allowed to take fewer than three subjects, to enable time to be spent most productively during Sixth Form.

Subjects

This list shows all subjects that at this stage are offered for September 2012 either at Sherburn or Tadcaster as part of the collaborative arrangement.

AS / A2 levels

Accountancy

Art & Design

Design Technology

- **Graphics**
- **Food Technology**
- **Product Design**
- **Textiles**
- **Systems Control**

Economics

English Lang and Lit

English Language

English Literature

French

Further Maths

Geography

German

Health & Social Care

History

ICT AS

Law

Maths

Media Studies

Music

Performing Arts

Photography

Psychology

Religious Studies

Science

- **Biology**
- **Chemistry**
- **Physics**

Sociology

Physical Education

Other level 3 courses

Applied Business Studies

ICT Btec

Sports studies – OCR National

Travel & Tourism

Level 2 courses

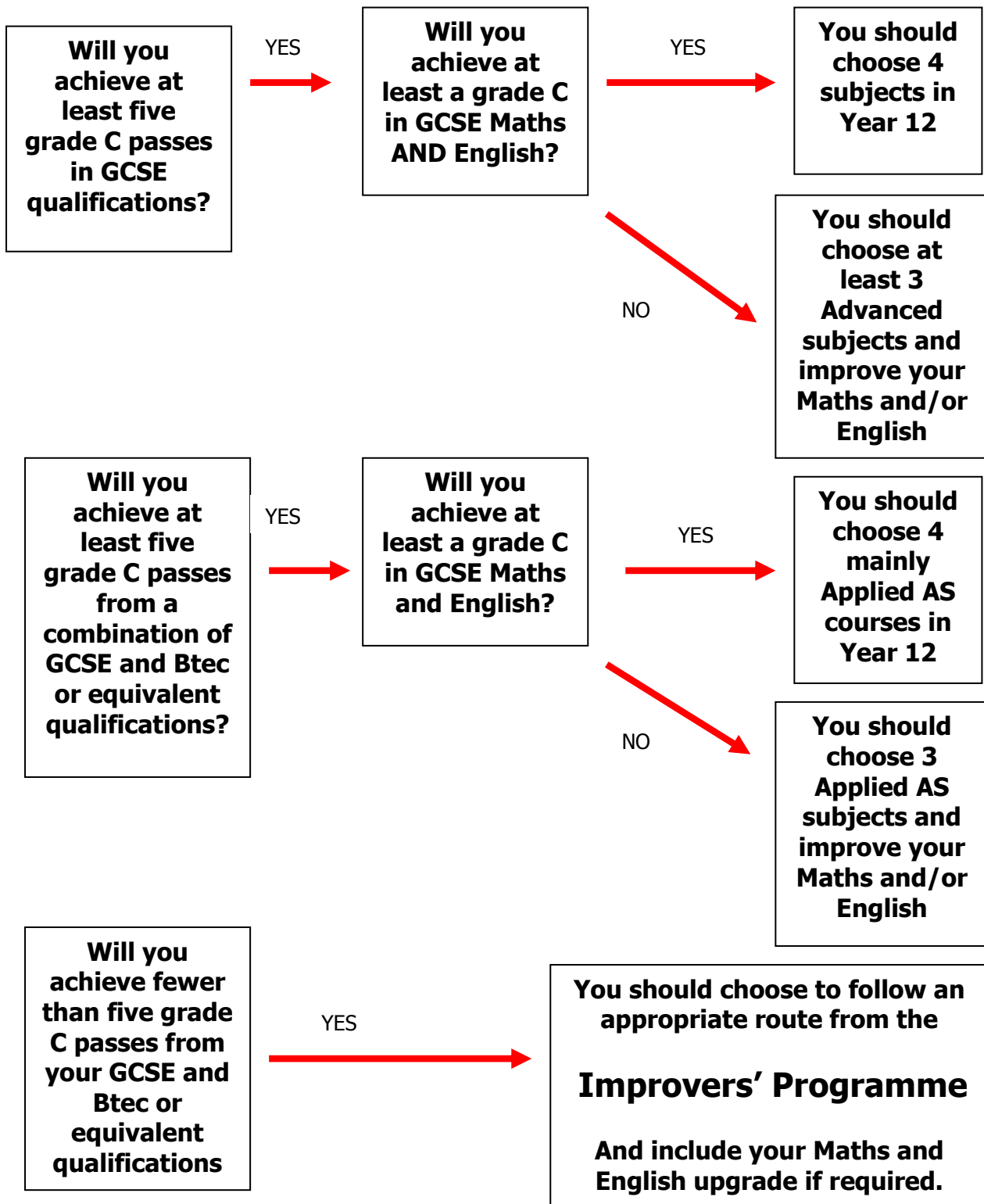
Business Admin (4 GCSE equivalence)

GCSE Maths retake

GCSE English retake

Learning Routes

What level course should I consider?



Support and Guidance

You will be part of a Vertical Tutor form group during your time in Post 16 Education at Sherburn. Each morning registration you will meet with your tutor along with the rest of your tutor group. Tutor groups are quite small, with an average of eighteen students per group, so you'll be able to get to know your tutor and the other students in your group really well.

Your progress is reviewed on a regular basis and reports are produced at regular intervals throughout the academic year. In addition to following a specifically designed Post 16 skills' programme, which involves a wealth of information about other opportunities, your examination entries, further and higher education, gap years and about other routes into employment, your tutors will also spend time talking to individuals about their reports, their subjects and their targets. There is also the opportunity for parents to consult with teachers in the Autumn Term of Year 12 and Year 13.

There are fortnightly assemblies where both Year 12 and Year 13 meet together in the Hall for a formal assembly. During these times Ms. Smith will spend time talking to you to keep you up-to-date with information specific to Post 16. These fortnightly meetings will complement the Vertical House assemblies, which will happen every week.

We have an "open reference" policy which means that all university, college and employment references can be seen by you before they are sent off.



If you are seeking employment then you have direct access through school to a Careers Adviser. The Careers Adviser can also help you to make choices if you are unsure of the route you want to follow after Post 16.

Our varied and wide ranging Enrichment Programme forms the informal part of our curriculum and will help you stand out from the crowd in future. This will be arranged through your form tutor as soon as you start in September. The following page outlines some of the activities involved.

Enrichment

The Sixth Form benefits from a wide range of community and school based enrichment activities, the aim of which is to help you to widen your experience and to help you to develop new interests and hobbies. Participation in such a wide range of enrichment activities helps our students to stand out from the crowd in future. We recognise how highly employers and universities value the broadening of your horizons and we strive to meet the needs of a large variety of interests.

Community Volunteers

Step into Sport

Young Enterprise (2008 and 2009 North Yorkshire and Regional Winners, National Finalists)

Rotary Youth Leadership Award (RYLA)

Duke of Edinburgh

The Athelstan Challenge

Work shadowing or experience

Sports teams

Drama Club

Drama Productions

Music events

Visits to universities

Visits to Higher Education Fairs

Trips

Peer group mentoring

Classroom assistants

Lower school reading buddies

Library Assistants

Maths and English Mentors

PE Helpers

Running after school clubs

Vertical Tutoring

The move to vertical tutoring at Sherburn High School:

Key reasons:

- Gives older students more responsibilities: help younger students to read / do homework / help with problems
- Makes tutorial more meaningful – all students have roles
- Form tutors have quality time to mentor students
- Helps with UCAS statements & references for jobs
- Students will be in houses with lots of opportunities for competitions: sport, Sherburn's got talent, Mastermind, Countdown... Termly House trophy
- The "family" unit is the basis of successful societies
- Quality tutoring has an impact on attendance, behaviour and attainment
- Basic skills, like literacy, are crucial for achievement and older students can support younger students. By doing so, they will improve and reinforce their own learning

Format:

- Students are in 4 houses with 10 form groups each
- Each form will have @20 students – very personalised mentoring
- Each house will have house achievement leader & house achievement coordinator & SLT link
- Weekly house assemblies
- Siblings in same house (not tutor group) for ease of parents – 1 point of contact & staff get to know families
- Each house will pick a charity to support for the year
- Each house will organise one community event per year: e.g. pensioners Christmas party
- 1 Head of House will maintain oversight of transition & Year 7 / KS3 / KS4 / KS5 (Ms. E. Smith) & there is administration support.

How to contact us:

By post to: Ms E Smith
Post 16 Co-ordinator
Sherburn High School
Garden Lane
Sherburn in Elmet
Leeds
LS25 6AS

By telephone on: 01977 682442

By Fax on: 01977 682752

By e.mail: admin@sherburnhigh.co.uk

